

The Place of Performance Management in the Employee Lifecycle

Performance Management plays an integral role in the employee lifecycle at a company. See below where Performance Management fits into the picture.



SIGNIFY SOLUTION
MODULE OPTIONS

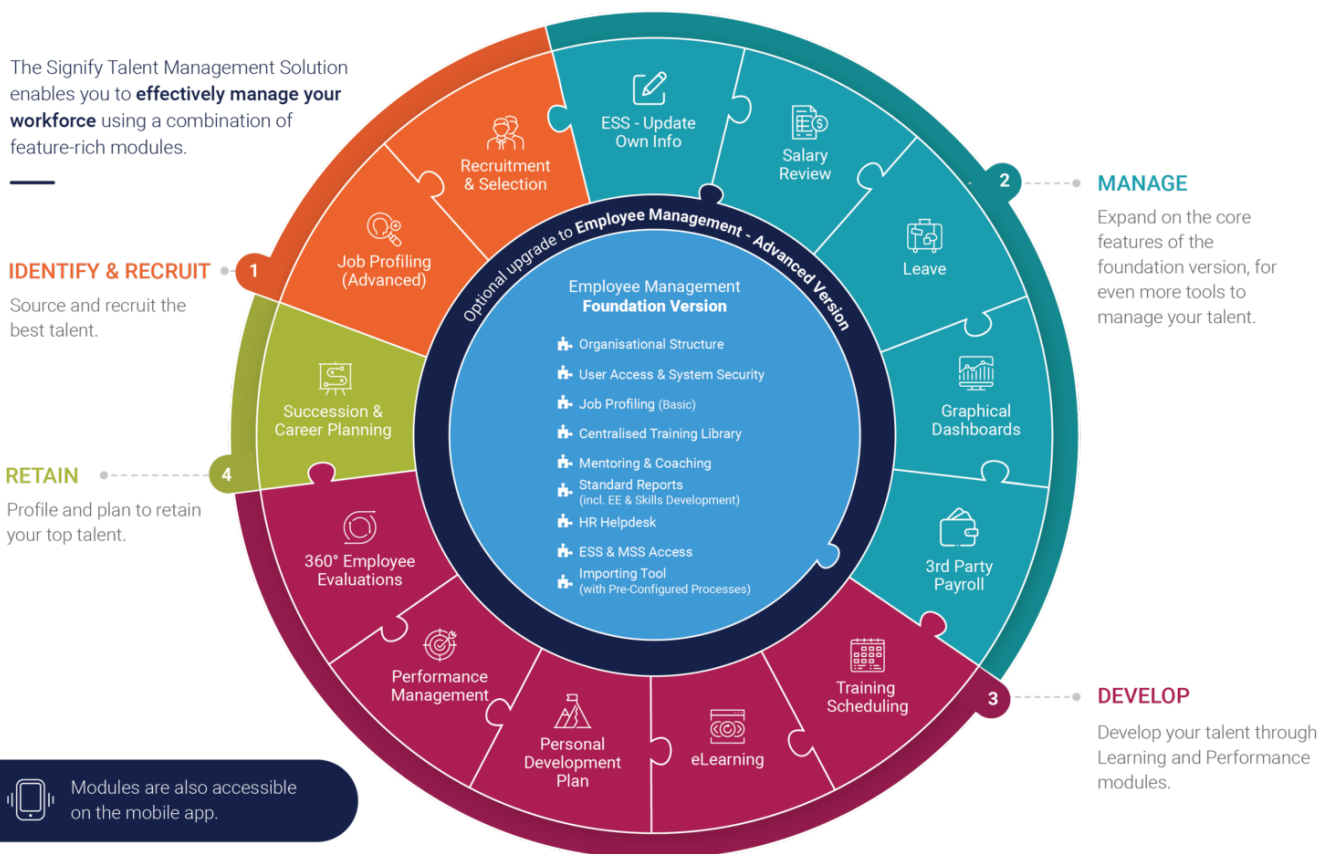
The Signify Talent Management Solution enables you to **effectively manage your workforce** using a combination of feature-rich modules.

IDENTIFY & RECRUIT

Source and recruit the best talent.

RETAIN

Profile and plan to retain your top talent.





Revision #10

Created 17 February 2022 05:28:49 by Eduard

Updated 6 June 2022 13:28:13 by Marié Joubert-Wallis